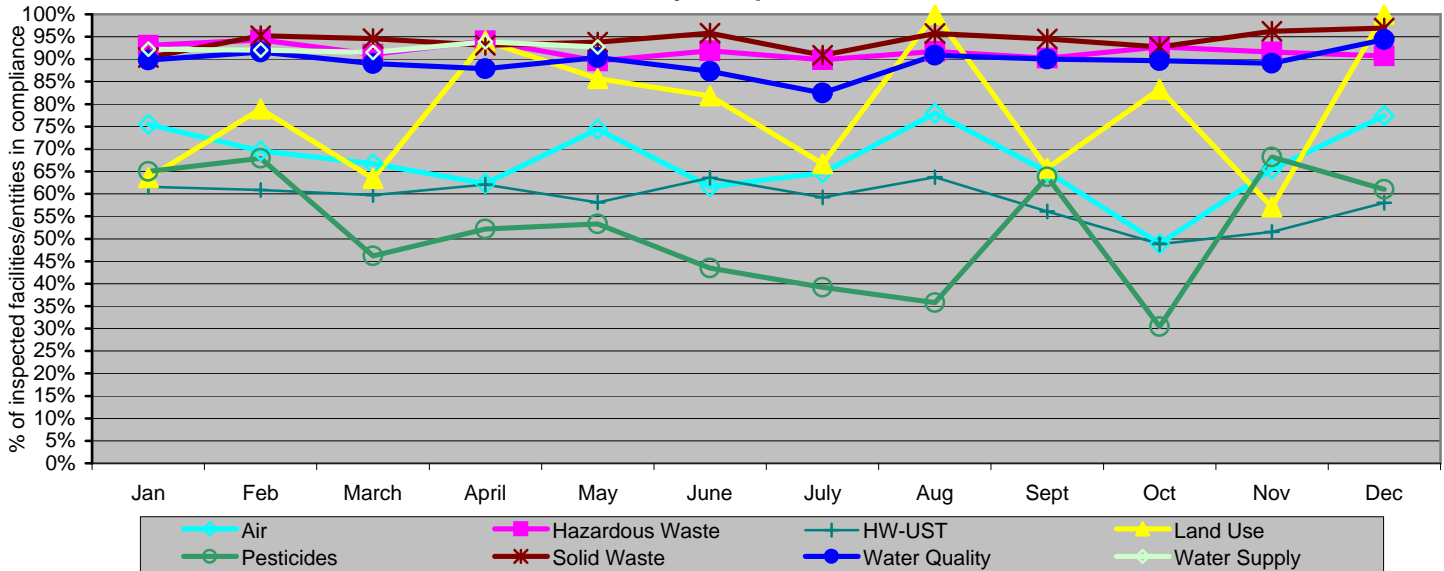


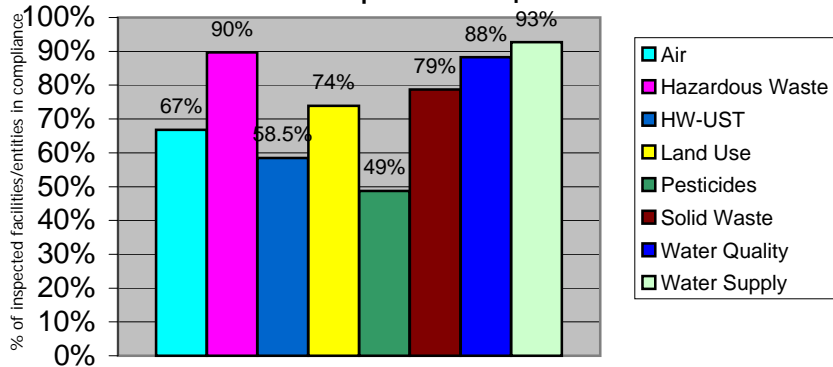
2010 Inspection-Based, Facility Compliance Rates

Compliance rates are based the number of discrete facilities or entities inspected by the programs and reflect the percentage found in compliance. Entities are only counted once even if inspected multiple times within a given period. One or more violations at any inspection in the period counts as non-compliance. The entities counted here are only where routine or pre-planned inspections occurred and are primarily where permits, licenses, or other Departmental approvals exist. These figures exclude observations based solely on submittals of self-reported information, monitoring and investigations (such as those stemming from hot-line calls or complaints). This report was run on July 18, 2011.

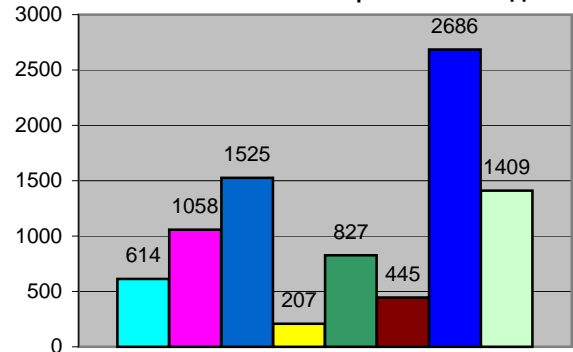
2010 Monthly Compliance Rate Trends



2010 Compliance Rates†



Facilities/Entities Inspected in 2010††



Compliance Rate	Jan	Feb	March	April	May	June	July	Aug	Sept	Oct	Nov	Dec	Entire year†
Air	75.5%	69.6%	66.7%	62.3%	74.4%	61.6%	64.7%	78.0%	64.9%	48.9%	65.5%	77.4%	66.8%
Hazardous Waste	93.1%	94.3%	91.1%	94.1%	89.6%	91.9%	89.9%	91.7%	90.2%	92.7%	91.6%	90.7%	89.7%
HW-UST	61.6%	60.9%	59.7%	62.1%	58.1%	63.6%	59.2%	63.7%	56.1%	48.8%	51.5%	58.0%	58.5%
Land Use	63.6%	78.9%	63.4%	94.1%	85.7%	81.8%	66.7%	100.0%	65.7%	83.3%	57.1%	100.0%	73.9%
Pesticides	65.0%	67.9%	46.2%	52.2%	53.3%	43.5%	39.2%	35.8%	63.8%	30.4%	68.2%	61.0%	48.7%
Solid Waste	90.4%	95.2%	94.6%	93.1%	93.8%	95.8%	90.9%	95.7%	94.5%	92.7%	96.2%	96.9%	78.7%
Water Quality	89.8%	91.6%	89.0%	87.9%	90.4%	87.3%	82.5%	90.9%	90.0%	89.7%	89.1%	94.4%	88.3%
Water Supply	92.2%	92.0%	91.5%	93.9%	92.7%	93.6%	92.7%	93.6%	88.8%	95.5%	92.0%	96.1%	92.7%
Facilities Inspected	Jan	Feb	March	April	May	June	July	Aug	Sept	Oct	Nov	Dec	Entire year††
Air	49	46	66	53	43	73	51	50	57	45	55	31	614
Hazardous Waste	131	88	179	118	106	148	79	108	123	124	119	97	1058
HW-UST	112	46	139	140	105	118	169	226	107	168	132	81	1525
Land Use*	22	19	41	17	14	11	18	15	35	6	7	4	207
Pesticides	40	28	65	115	120	124	74	106	69	46	22	41	827
Solid Waste	228	189	260	247	211	261	208	233	218	220	210	229	445
Water Quality	216	155	290	231	322	355	194	274	339	291	230	178	2686
Water Supply	115	87	164	132	151	236	82	94	116	111	100	76	1409
Totals	913	658	1204	1053	1072	1326	875	1106	1064	1011	875	737	8771

** A new Underground Storage Tank (UST) inspection program began in early 2004.

† Compliance Rates for the entire year will be lower than average monthly rates because of repeat visits to some facilities.

†† Facilities Inspected for the entire year will be lower than the total for all months because of repeat visits to some facilities.