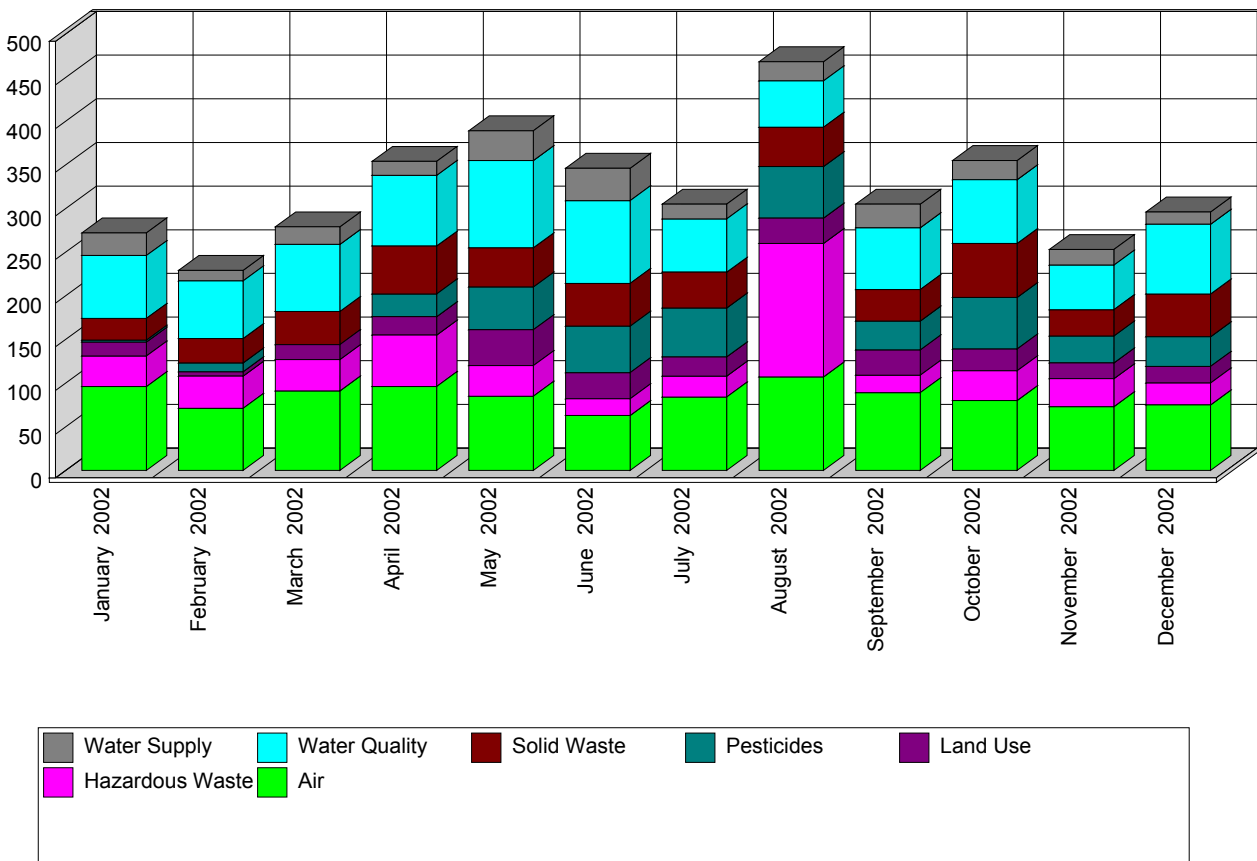


## Enforcement Actions Issued between 01/01/2002 and 12/31/2002.

**Enforcement Actions are the documents issued to violators that spell out the details of one or more alleged violations, any steps needed to correct them, any penalties, and the schedules for compliance and/or penalty payment.**

Enforcement Actions may be informal notices or formal documents recognized by the courts. Enforcement actions can address multiple violations of varied regulations over time but are typically limited to a single program's concerns from a single compliance evaluation at a single site. Enforcement Actions are counted on the date they are made effective, most often this is the date of receipt by the violator.



**Use the following links for more information about the programs**

**Air** <http://www.nj.gov/dep/enforcement/air.html>

**Pesticides** <http://www.nj.gov/dep/enforcement/pcp.html>

**Hazardous Waste** <http://www.nj.gov/dep/enforcement/hw.html>

**Solid Waste** <http://www.nj.gov/dep/enforcement/sw.html>

**Land Use** <http://www.nj.gov/dep/enforcement/lu.html>

**Water** <http://www.nj.gov/dep/enforcement/water.html>

## Summary of Enforcement Actions

	Jan 2002	Feb 2002	Mar 2002	Apr 2002	May 2002	Jun 2002	Jul 2002	Aug 2002	Sep 2002	Oct 2002	Nov 2002	Dec 2002	Program Totals:
<b>Air</b>	96	71	91	96	85	63	84	107	89	80	73	75	1010
<b>Hazardous Waste</b>	35	37	36	59	35	19	24	153	20	34	32	25	509
<b>Land Use</b>	16	5	17	21	41	30	22	29	29	25	18	19	272
<b>Pesticides</b>	2	10		26	49	53	56	59	33	59	31	34	412
<b>Solid Waste</b>	25	28	38	55	45	49	41	45	36	62	30	49	503
<b>Water Quality</b>	72	66	77	81	100	95	61	53	71	73	51	80	880
<b>Water Supply</b>	26	12	20	16	34	37	17	22	27	22	18	14	265
<b>Monthly Totals:</b>	272	229	279	354	389	346	305	468	305	355	253	296	<b>Grand Total: 3851</b>