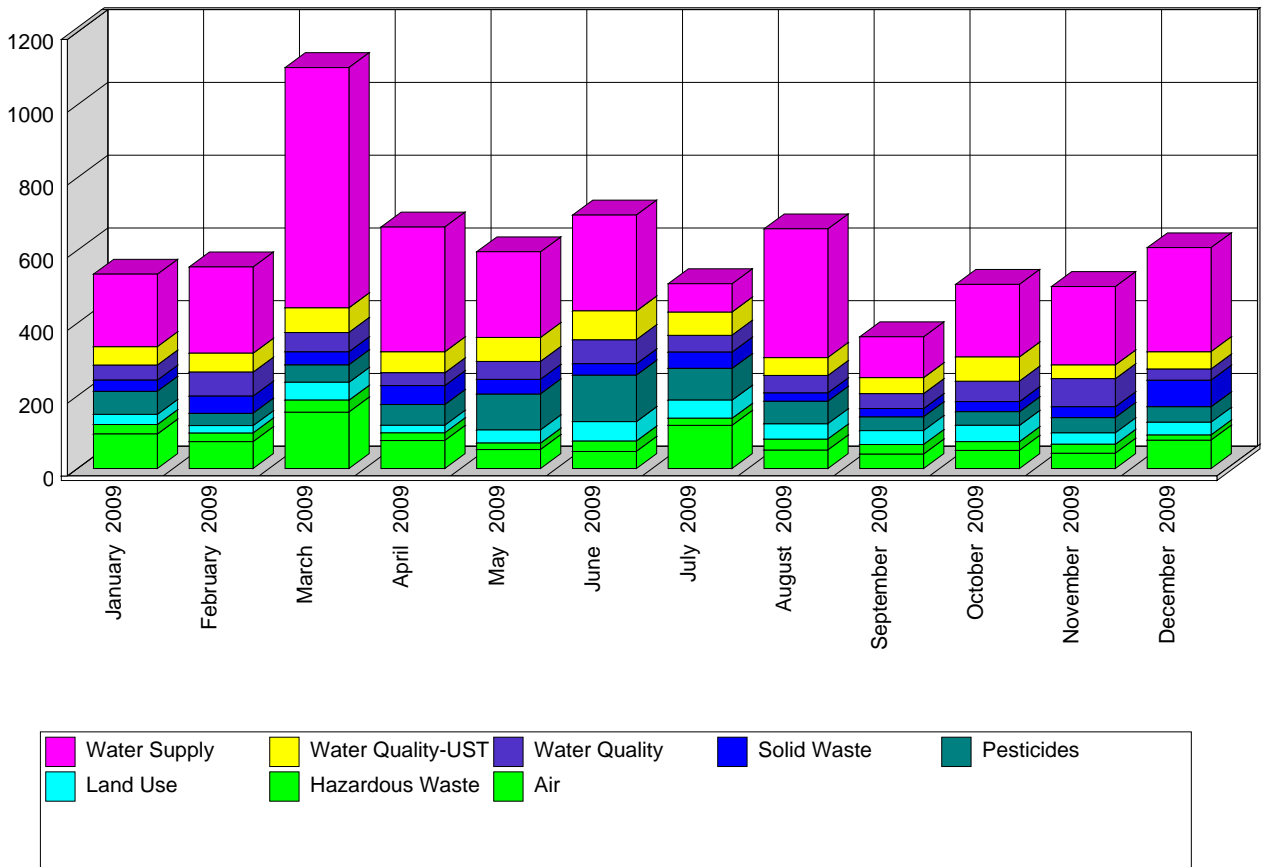


## Enforcement Actions Issued between 01/01/09 and 12/31/09

**Enforcement Actions** are the documents issued to violators that spell out the details of one or more alleged violations, any steps needed to correct them, any penalties, and the schedules for compliance and/or penalty payment.

Enforcement Actions may be informal notices or formal documents recognized by the courts. Enforcement actions can address multiple violations of varied regulations over time but are typically limited to a single program's concerns from a single compliance evaluation at a single site. Enforcement Actions are counted on the date they are made effective, most often this is the date of receipt by the violator.



**Use the following links for more information about the programs**

**Air** <http://www.nj.gov/dep/enforcement/air.html>

**Pesticides** <http://www.nj.gov/dep/enforcement/pcp.html>

**Hazardous Waste** <http://www.nj.gov/dep/enforcement/hw.html>

**Solid Waste** <http://www.nj.gov/dep/enforcement/sw.html>

**Land Use** <http://www.nj.gov/dep/enforcement/lu.html>

**Water** <http://www.nj.gov/dep/enforcement/water.html>

**Underground Storage Tanks** <http://www.nj.gov/dep/enforcement/ust.html>

## Summary of Enforcement Actions

	Jan 2009	Feb 2009	Mar 2009	Apr 2009	May 2009	Jun 2009	Jul 2009	Aug 2009	Sep 2009	Oct 2009	Nov 2009	Dec 2009	Program Totals:
<b>Air</b>	95	74	155	77	52	47	119	51	40	50	42	78	880
<b>Hazardous Waste</b>	26	24	33	21	18	29	19	30	26	24	25	14	289
<b>Land Use</b>	28	20	49	21	36	53	50	42	38	45	31	35	448
<b>Pesticides</b>	63	34	48	57	99	128	87	62	38	37	42	43	738
<b>Solid Waste</b>	31	47	36	52	40	31	45	23	23	28	30	73	459
<b>Water Quality</b>	41	66	53	35	49	66	46	48	41	56	77	31	609
<b>Water Quality-UST</b>	51	52	68	58	66	79	64	49	44	67	38	47	683
<b>Water Supply</b>	199	237	660	343	236	264	78	354	112	199	215	286	3183
<b>Monthly Totals:</b>	534	554	1102	664	596	697	508	659	362	506	500	607	<b>Grand Total: 7289</b>