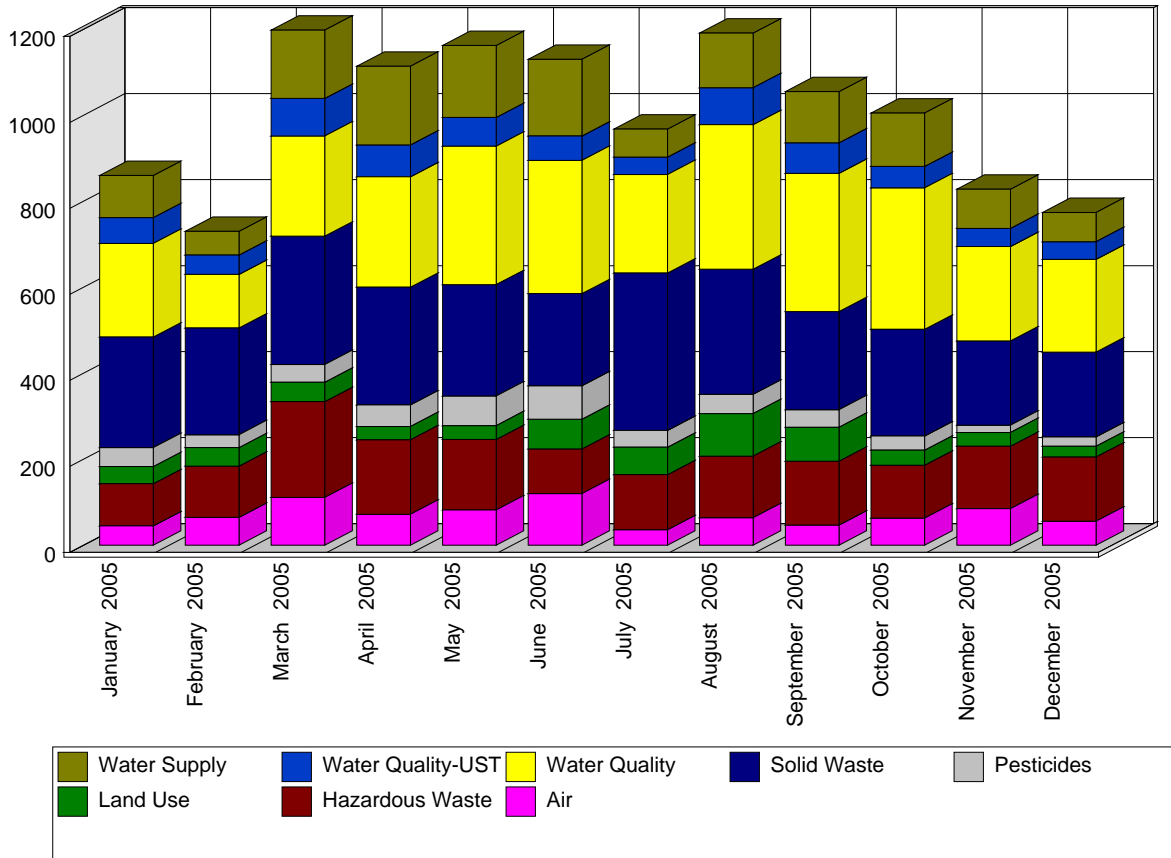


Site Inspections Conducted between 01/01/05 and 12/31/05.

Site Inspections are compliance evaluations conducted through site visits. The Department anticipated and planned for the vast majority of these activities, which typically occur at known regulated sites.

Most often these inspections are single-day, single-inspector efforts, but may involve more than one inspector and may take more than one day. Each inspection typically evaluates the entire site for a single program's regulations, but may be more broad (multiple programs) or less broad (only a focused part of the site or specific regulations). Site Inspections are counted on the date of the site visit.



Use the following links for more information about the programs

Air <http://www.nj.gov/dep/enforcement/air.html>

Pesticides <http://www.nj.gov/dep/enforcement/pcplue-admin.html>

Hazardous Waste <http://www.nj.gov/dep/enforcement/hw.html>

Solid Waste <http://www.nj.gov/dep/enforcement/sw.html>

Land Use <http://www.nj.gov/dep/enforcement/clue.html>

Water <http://www.nj.gov/dep/enforcement/water.html>

Summary of Site Inspections

	Jan 2005	Feb 2005	Mar 2005	Apr 2005	May 2005	Jun 2005	Jul 2005	Aug 2005	Sep 2005	Oct 2005	Nov 2005	Dec 2005	Program Totals:
Air	45	65	111	72	82	120	36	64	47	63	85	56	846
Hazardous Waste	98	119	223	173	164	104	128	143	148	123	145	149	1,717
Land Use	40	43	45	31	32	69	64	99	79	35	32	25	594
Pesticides	44	30	41	50	69	78	39	45	41	33	17	22	509
Solid Waste	257	248	299	274	259	214	366	291	228	248	196	197	3,077
Water Quality	218	125	233	257	322	310	229	336	322	329	220	216	3,117
Water Quality-UST	60	45	87	74	67	57	41	86	71	50	42	41	721
Water Supply	98	55	159	183	167	178	65	127	119	124	91	68	1,434
Monthly Totals:	860	730	1,198	1,114	1,162	1,130	968	1,191	1,055	1,005	828	774	Grand Total: 12015