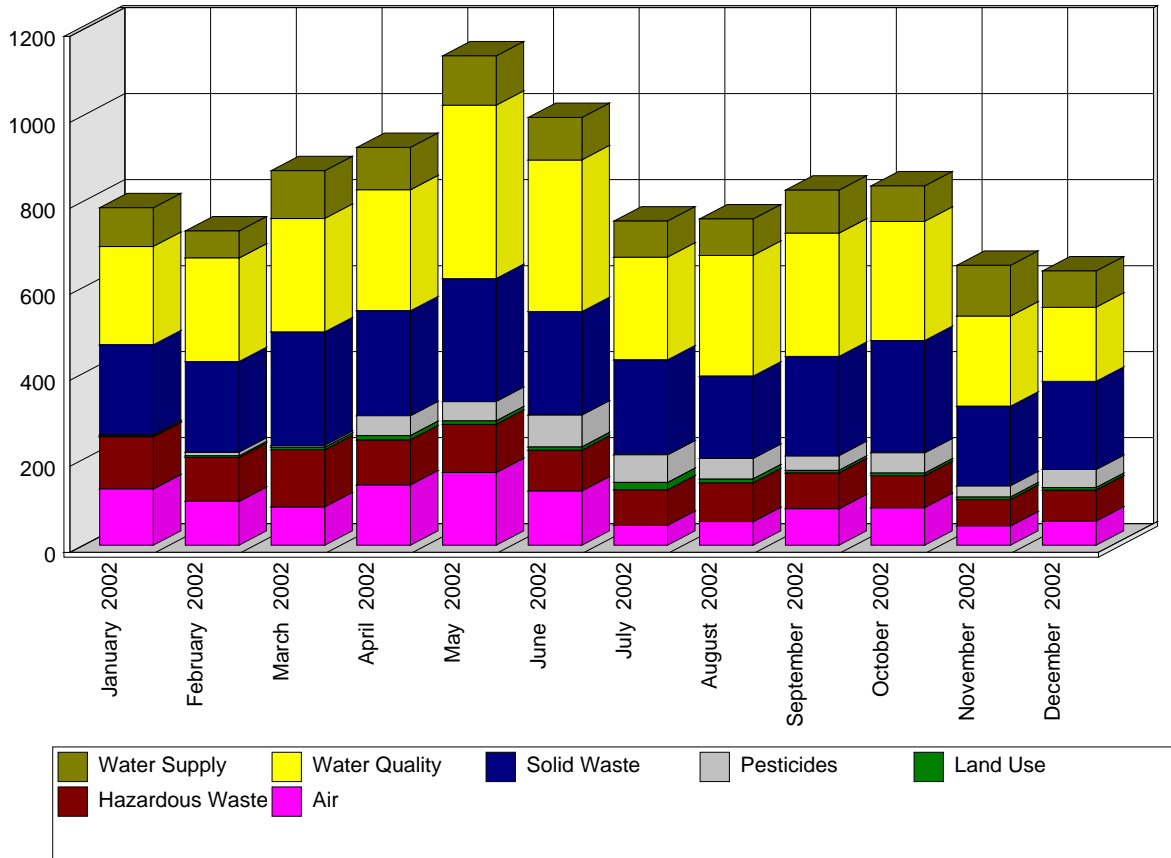


Site Inspections Conducted between 01/01/02 and 12/31/02.

Site Inspections are compliance evaluations conducted through site visits. The Department anticipated and planned for the vast majority of these activities, which typically occur at known regulated sites.

Most often these inspections are single-day, single-inspector efforts, but may involve more than one inspector and may take more than one day. Each inspection typically evaluates the entire site for a single program's regulations, but may be more broad (multiple programs) or less broad (only a focused part of the site or specific regulations). Site Inspections are counted on the date of the site visit.



Use the following links for more information about the programs

Air <http://www.nj.gov/dep/enforcement/air.html>

Pesticides <http://www.nj.gov/dep/enforcement/pcp.html>

Hazardous Waste <http://www.nj.gov/dep/enforcement/hw.html>

Solid Waste <http://www.nj.gov/dep/enforcement/sw.html>

Land Use <http://www.nj.gov/dep/enforcement/lu.html>

Water <http://www.nj.gov/dep/enforcement/water.html>

Summary of Site Inspections

	Jan 2002	Feb 2002	Mar 2002	Apr 2002	May 2002	Jun 2002	Jul 2002	Aug 2002	Sep 2002	Oct 2002	Nov 2002	Dec 2002	Program Totals:
Air	131	102	89	140	169	126	46	55	85	87	45	56	1,131
Hazardous Waste	121	102	133	105	112	95	83	90	83	75	61	72	1,132
Land Use	2	4	6	10	8	8	17	9	6	6	6	6	88
Pesticides	3	8	4	46	45	74	64	48	34	47	26	42	441
Solid Waste	209	211	264	244	286	240	221	191	231	261	185	205	2,748
Water Quality	229	241	264	282	403	353	239	281	287	277	210	172	3,238
Water Supply	90	63	111	98	115	99	84	85	100	83	118	85	1,131
Monthly Totals:	785	731	871	925	1,138	995	754	759	826	836	651	638	Grand Total: 9909