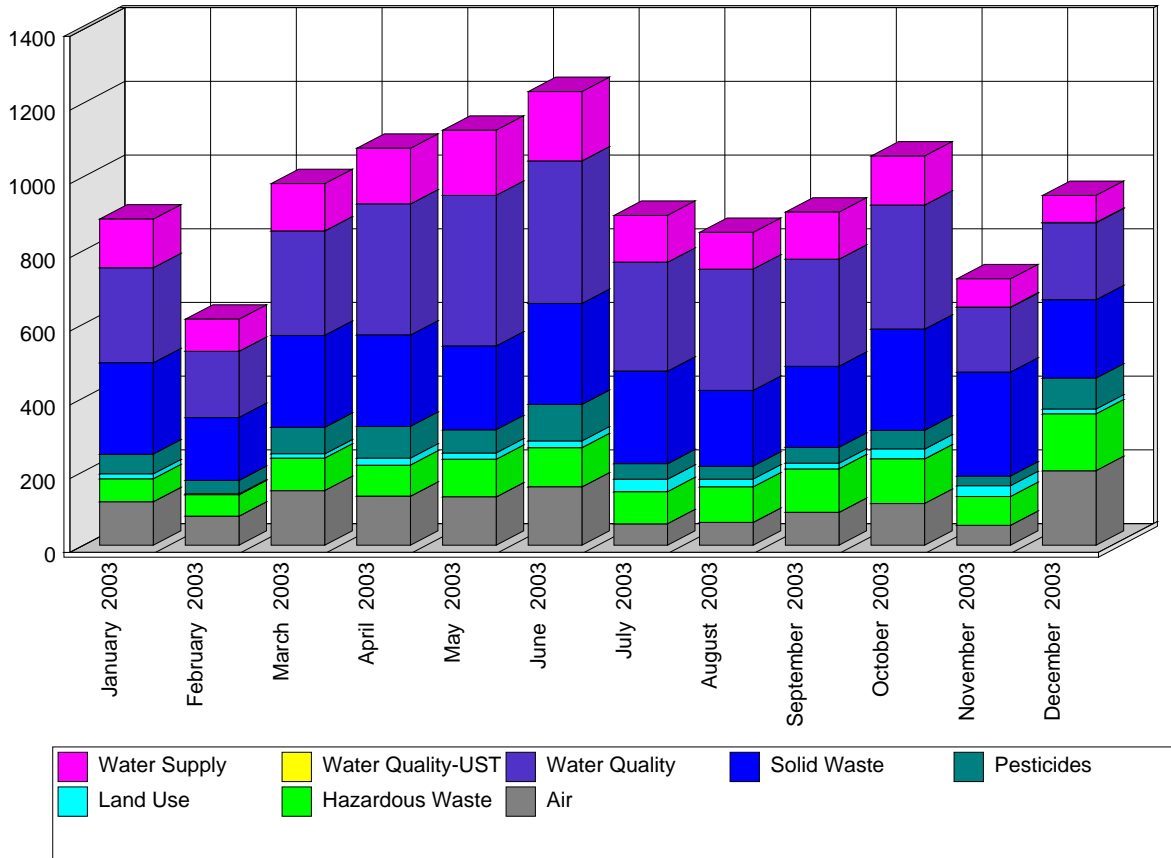


Site Inspections Conducted between 01/01/03 and 12/31/03.

Site Inspections are compliance evaluations conducted through site visits. The Department anticipated and planned for the vast majority of these activities, which typically occur at known regulated sites.

Most often these inspections are single-day, single-inspector efforts, but may involve more than one inspector and may take more than one day. Each inspection typically evaluates the entire site for a single program's regulations, but may be more broad (multiple programs) or less broad (only a focused part of the site or specific regulations). Site Inspections are counted on the date of the site visit.



Use the following links for more information about the programs

Air <http://www.nj.gov/dep/enforcement/air.html>

Pesticides <http://www.nj.gov/dep/enforcement/pcp.html>

Hazardous Waste <http://www.nj.gov/dep/enforcement/hw.html>

Solid Waste <http://www.nj.gov/dep/enforcement/sw.html>

Land Use <http://www.nj.gov/dep/enforcement/lu.html>

Water <http://www.nj.gov/dep/enforcement/water.html>

Underground Storage Tanks <http://www.nj.gov/dep/enforcement/ust.html>

Summary of Site Inspections

	Jan 2003	Feb 2003	Mar 2003	Apr 2003	May 2003	Jun 2003	Jul 2003	Aug 2003	Sep 2003	Oct 2003	Nov 2003	Dec 2003	Program Totals:
Air	118	79	148	133	131	158	58	62	89	113	54	202	1,345
Hazardous Waste	62	58	88	84	102	106	87	96	118	121	78	154	1,154
Land Use	13	2	12	19	17	19	34	21	15	27	29	13	221
Pesticides	54	37	72	86	63	99	42	35	43	51	26	84	692
Solid Waste	248	170	249	248	227	274	251	206	220	274	282	213	2,862
Water Quality	258	180	284	356	409	387	296	329	291	337	176	209	3,512
Water Quality-UST											1	1	2
Water Supply	132	87	128	151	177	188	127	100	128	133	77	73	1,501
Monthly Totals:	885	613	981	1,077	1,126	1,231	895	849	904	1,056	723	949	Grand Total: 11289