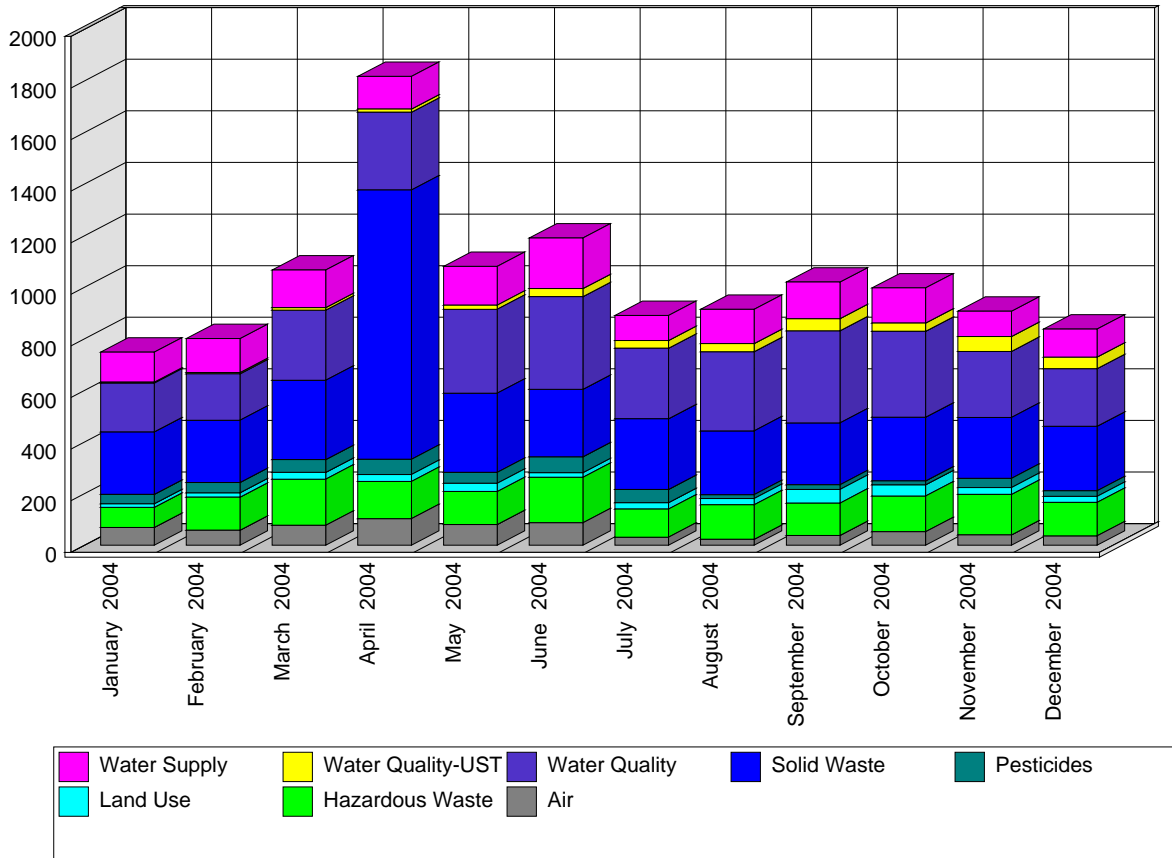


Site Inspections Conducted between 01/01/04 and 12/31/04.

Site Inspections are compliance evaluations conducted through site visits. The Department anticipated and planned for the vast majority of these activities, which typically occur at known regulated sites.

Most often these inspections are single-day, single-inspector efforts, but may involve more than one inspector and may take more than one day. Each inspection typically evaluates the entire site for a single program's regulations, but may be more broad (multiple programs) or less broad (only a focused part of the site or specific regulations). Site Inspections are counted on the date of the site visit.



Use the following links for more information about the programs

Air <http://www.nj.gov/dep/enforcement/air.html>

Pesticides <http://www.nj.gov/dep/enforcement/pcp.html>

Hazardous Waste <http://www.nj.gov/dep/enforcement/hw.html>

Solid Waste <http://www.nj.gov/dep/enforcement/sw.html>

Land Use <http://www.nj.gov/dep/enforcement/lu.html>

Water <http://www.nj.gov/dep/enforcement/water.html>

Underground Storage Tanks <http://www.nj.gov/dep/enforcement/ust.html>

Summary of Site Inspections

	Jan 2004	Feb 2004	Mar 2004	Apr 2004	May 2004	Jun 2004	Jul 2004	Aug 2004	Sep 2004	Oct 2004	Nov 2004	Dec 2004	Program Totals:
Air	69	58	77	103	80	87	31	23	38	52	40	36	694
Hazardous Waste	78	128	179	144	128	176	109	134	125	139	157	130	1,627
Land Use	14	17	26	27	32	18	25	24	53	43	26	23	328
Pesticides	36	40	50	59	42	62	51	15	18	15	36	22	446
Solid Waste	242	241	307	1,044	307	261	274	247	240	247	236	250	3,896
Water Quality	189	180	272	301	325	359	273	307	357	333	256	223	3,375
Water Quality-UST	4	5	10	13	16	32	30	31	47	32	58	45	323
Water Supply	116	132	146	126	151	196	97	133	142	136	98	109	1,582
Monthly Totals:	748	801	1,067	1,817	1,081	1,191	890	914	1,020	997	907	838	Grand Total: 12271