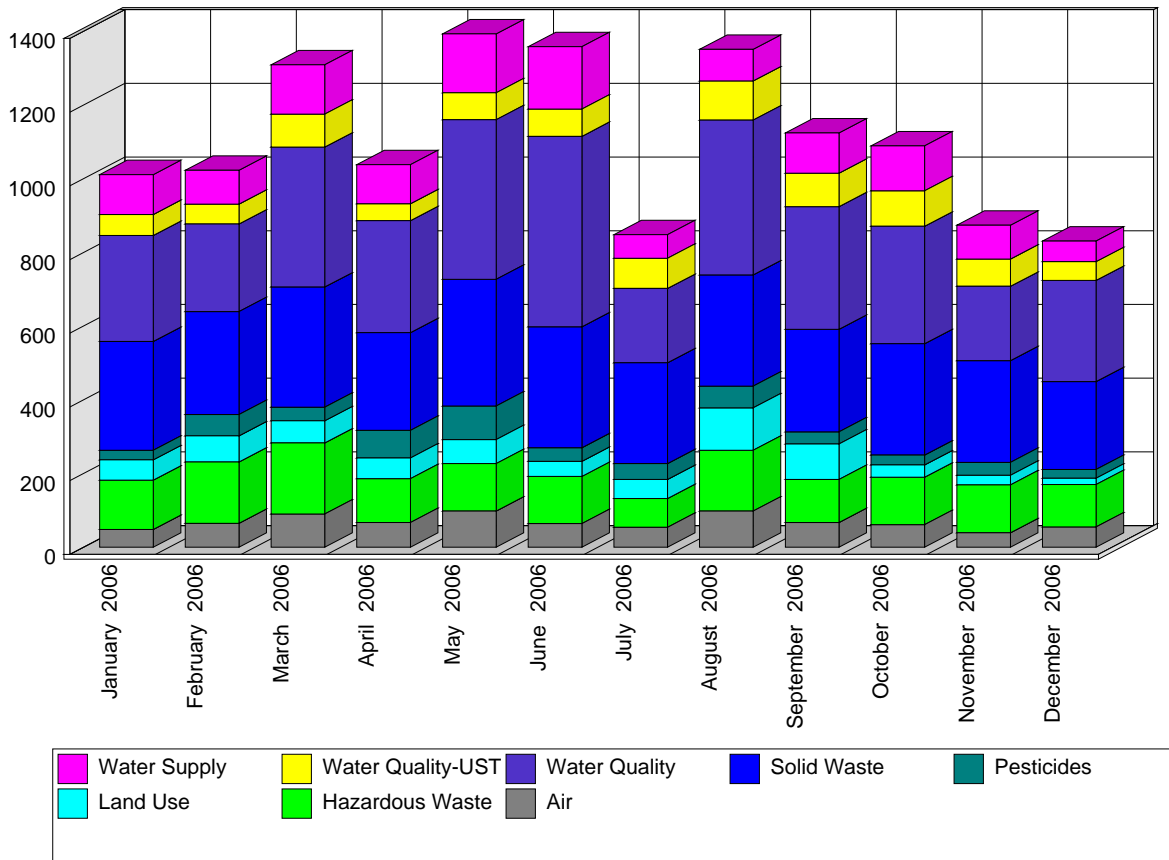


Site Inspections Conducted between 01/01/06 and 12/31/06.

Site Inspections are compliance evaluations conducted through site visits. The Department anticipated and planned for the vast majority of these activities, which typically occur at known regulated sites.

Most often these inspections are single-day, single-inspector efforts, but may involve more than one inspector and may take more than one day. Each inspection typically evaluates the entire site for a single program's regulations, but may be more broad (multiple programs) or less broad (only a focused part of the site or specific regulations). Site Inspections are counted on the date of the site visit.



Use the following links for more information about the programs

Air <http://www.nj.gov/dep/enforcement/air.html>

Pesticides <http://www.nj.gov/dep/enforcement/pcp.html>

Hazardous Waste <http://www.nj.gov/dep/enforcement/hw.html>

Solid Waste <http://www.nj.gov/dep/enforcement/sw.html>

Land Use <http://www.nj.gov/dep/enforcement/lu.html>

Water <http://www.nj.gov/dep/enforcement/water.html>

Underground Storage Tanks <http://www.nj.gov/dep/enforcement/ust.html>

Summary of Site Inspections

	Jan 2006	Feb 2006	Mar 2006	Apr 2006	May 2006	Jun 2006	Jul 2006	Aug 2006	Sep 2006	Oct 2006	Nov 2006	Dec 2006	Program Totals:
Air	48	65	90	67	98	64	54	98	67	61	39	55	806
Hazardous Waste	134	166	193	119	129	128	78	165	117	129	130	115	1,603
Land Use	55	71	60	56	65	41	52	115	96	33	26	17	687
Pesticides	26	58	37	75	91	37	43	59	33	27	35	24	545
Solid Waste	295	279	326	265	344	328	273	302	278	302	276	238	3,506
Water Quality	288	238	380	304	433	517	202	420	333	319	202	275	3,911
Water Quality-UST	57	54	89	46	73	74	82	106	91	96	74	51	893
Water Supply	108	92	134	106	160	169	64	86	109	122	92	56	1,298
Monthly Totals:	1,011	1,023	1,309	1,038	1,393	1,358	848	1,351	1,124	1,089	874	831	Grand Total: 13249