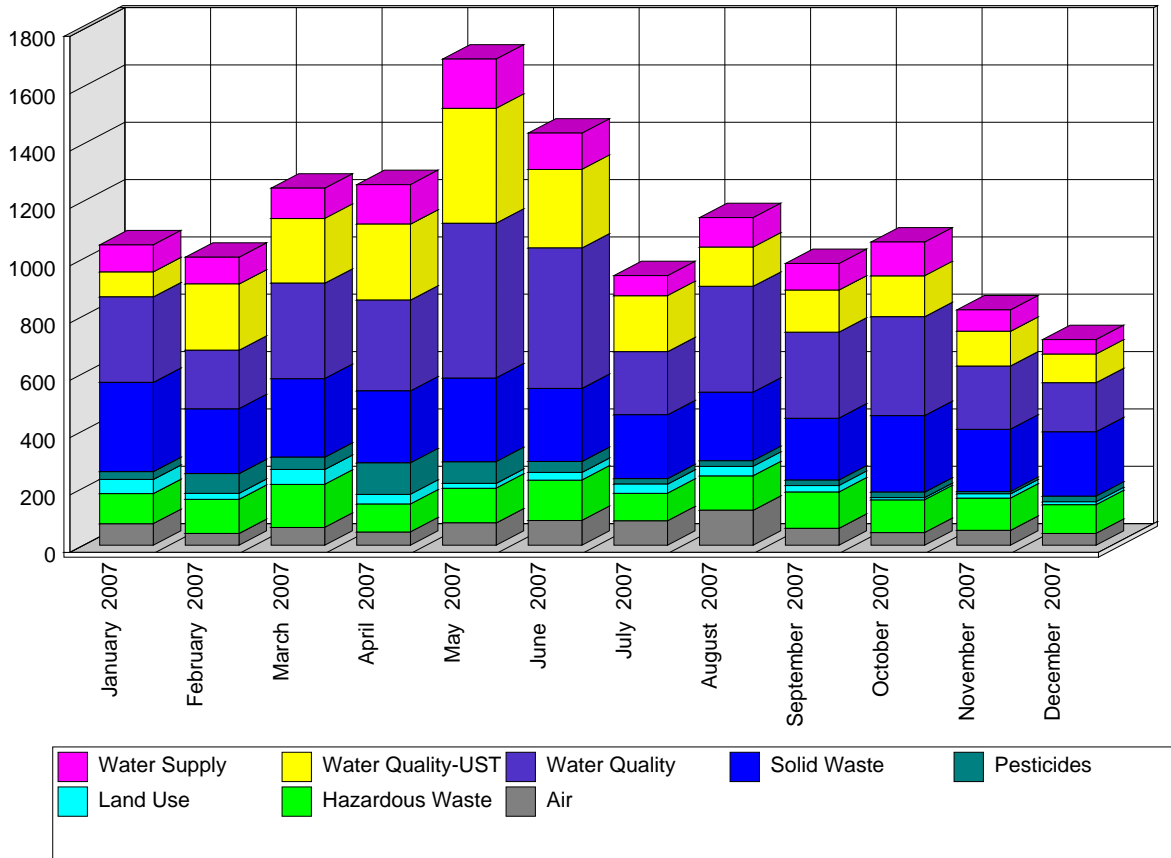


Site Inspections Conducted between 01/01/07 and 12/31/07.

Site Inspections are compliance evaluations conducted through site visits. The Department anticipated and planned for the vast majority of these activities, which typically occur at known regulated sites.

Most often these inspections are single-day, single-inspector efforts, but may involve more than one inspector and may take more than one day. Each inspection typically evaluates the entire site for a single program's regulations, but may be more broad (multiple programs) or less broad (only a focused part of the site or specific regulations). Site Inspections are counted on the date of the site visit.



Use the following links for more information about the programs

Air <http://www.nj.gov/dep/enforcement/air.html>

Pesticides <http://www.nj.gov/dep/enforcement/pcp.html>

Hazardous Waste <http://www.nj.gov/dep/enforcement/hw.html>

Solid Waste <http://www.nj.gov/dep/enforcement/sw.html>

Land Use <http://www.nj.gov/dep/enforcement/lu.html>

Water <http://www.nj.gov/dep/enforcement/water.html>

Underground Storage Tanks <http://www.nj.gov/dep/enforcement/ust.html>

Summary of Site Inspections

	Jan 2007	Feb 2007	Mar 2007	Apr 2007	May 2007	Jun 2007	Jul 2007	Aug 2007	Sep 2007	Oct 2007	Nov 2007	Dec 2007	Program Totals:
Air	75	41	62	46	78	86	85	122	59	44	52	41	791
Hazardous Waste	105	119	150	97	121	141	96	120	126	114	112	100	1,401
Land Use	49	21	52	34	17	27	32	33	23	8	15	10	321
Pesticides	28	69	43	110	75	38	19	20	19	19	8	20	468
Solid Waste	311	226	274	251	292	255	223	239	216	267	217	225	2,996
Water Quality	298	204	333	317	540	490	220	369	300	345	221	171	3,808
Water Quality-UST	88	231	226	265	401	274	195	137	147	143	121	100	2,328
Water Supply	94	94	106	138	172	127	71	103	93	118	75	50	1,241
Monthly Totals:	1,048	1,005	1,246	1,258	1,696	1,438	941	1,143	983	1,058	821	717	Grand Total: 13354