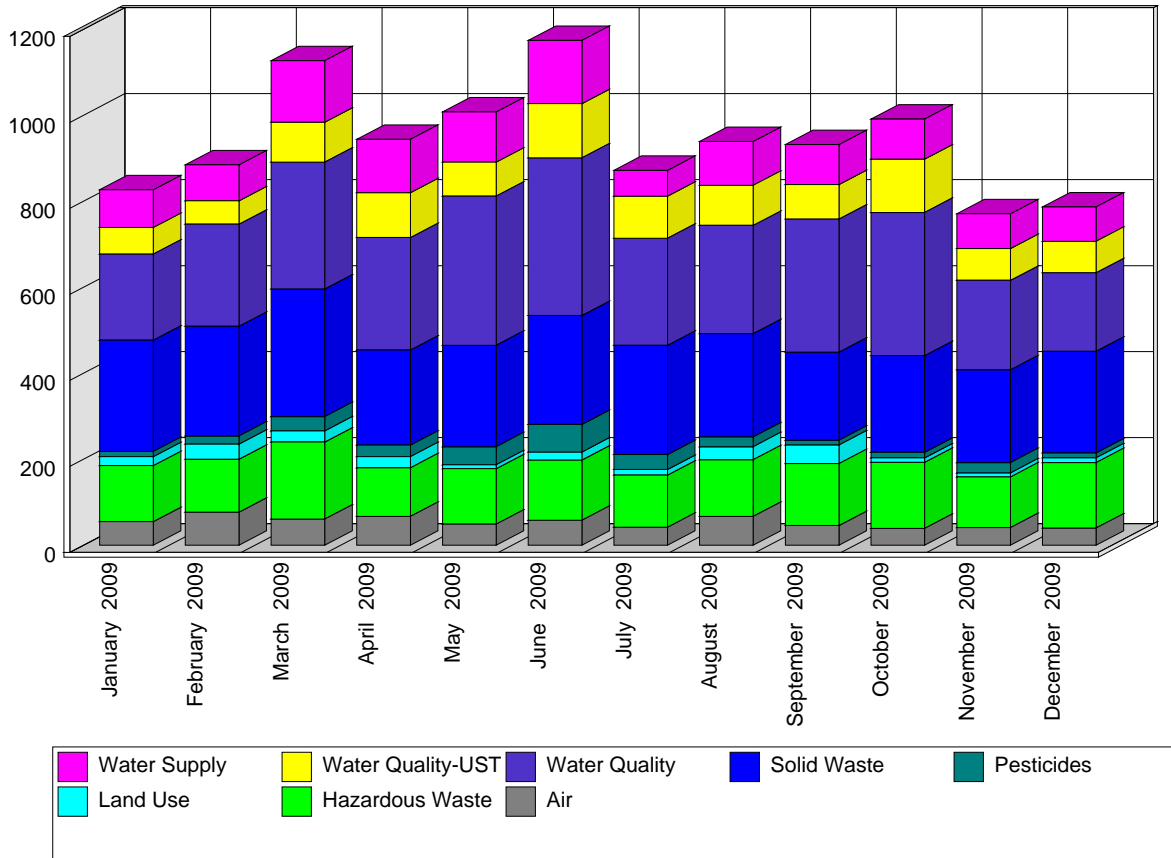


Site Inspections Conducted between 01/01/09 and 12/31/09.

Site Inspections are compliance evaluations conducted through site visits. The Department anticipated and planned for the vast majority of these activities, which typically occur at known regulated sites.

Most often these inspections are single-day, single-inspector efforts, but may involve more than one inspector and may take more than one day. Each inspection typically evaluates the entire site for a single program's regulations, but may be more broad (multiple programs) or less broad (only a focused part of the site or specific regulations). Site Inspections are counted on the date of the site visit.



Use the following links for more information about the programs

Air <http://www.nj.gov/dep/enforcement/air.html>

Pesticides <http://www.nj.gov/dep/enforcement/pcp.html>

Hazardous Waste <http://www.nj.gov/dep/enforcement/hw.html>

Solid Waste <http://www.nj.gov/dep/enforcement/sw.html>

Land Use <http://www.nj.gov/dep/enforcement/lu.html>

Water <http://www.nj.gov/dep/enforcement/water.html>

Underground Storage Tanks <http://www.nj.gov/dep/enforcement/ust.html>

Summary of Site Inspections

	Jan 2009	Feb 2009	Mar 2009	Apr 2009	May 2009	Jun 2009	Jul 2009	Aug 2009	Sep 2009	Oct 2009	Nov 2009	Dec 2009	Program Totals:
Air	55	77	61	67	49	58	42	67	46	39	41	40	642
Hazardous Waste	130	123	179	113	129	140	121	132	144	154	118	152	1,635
Land Use	21	35	26	26	9	19	13	30	43	10	9	11	252
Pesticides	12	19	33	27	42	64	35	23	11	13	24	12	315
Solid Waste	259	255	297	221	236	253	254	240	205	225	216	236	2,897
Water Quality	200	238	295	262	347	367	249	252	310	333	208	183	3,244
Water Quality-UST	62	54	93	104	79	126	98	93	80	124	74	73	1,060
Water Supply	88	84	143	124	117	147	60	102	93	93	81	80	1,212
Monthly Totals:	827	885	1,127	944	1,008	1,174	872	939	932	991	771	787	Grand Total: 11257